

PDFBraindumps



Latest Pdf Braindumps	Top Certifications	Top Vendors
▶ LRP-614	▶ ISEB Certification	▶ ISEB
▶ BCABA	▶ OCE	▶ ASTQB
▶ JN0-740	▶ NVIDIA Certifications	▶ Aruba
▶ 250-405	▶ Network+	▶ Data Center Universit
▶ DS-200	▶ IBM Certified Integrat	▶ HRCI
▶ SDM_2002001040	▶ CCDH	▶ CIW
▶ ST0-250	▶ IBM Certified Advanc	▶ Patchlink
▶ H12-221	▶ eserver Certified Spe	▶ International Consorti
▶ M2180-716	▶ SAP-Certifications	▶ Acme-Packet
	▶ Network Appliance N	
	▶ HCNP	▶ Fortinet
	▶ IFPUG Certifications	▶ Ericsson
	▶ dotMobi Certification	▶ Liferay
	▶ SCMA	▶ Novell
	▶ MCSD	▶ Huawei
	▶ NCLP	▶ RSA
	▶ XMLMaster Certificat	▶ MYSQL
	▶ CS5	▶ ISM
	▶ CHA	▶ CheckPoint

<http://www.pdfbraindumps.com>

Latest pdf braindumps provider, high pass rate

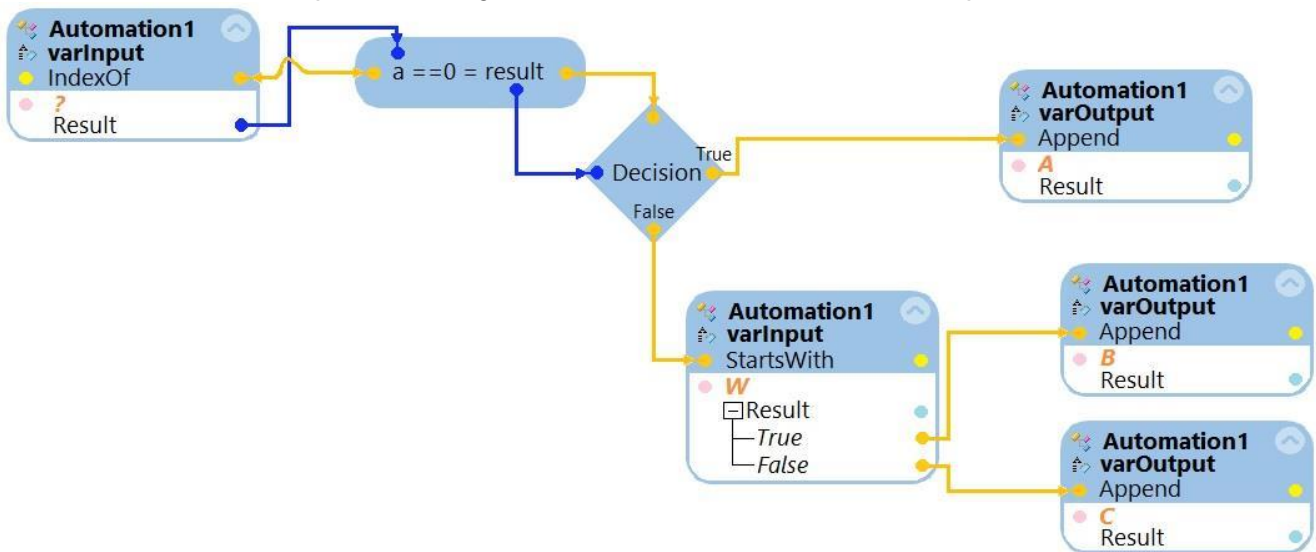
Exam : **PEGAPCRSA80V1_2019**

Title : Pega Certified Robotics
System Architect (PCRSA)
80V1 2019

Vendor : Pegasystems

Version : DEMO

NO.1 The variable varInput is a String that holds the value What is the output?



What is the outcome of the above automation?

- A. The variable varOutput ends with A.
- B. The variable varOutput ends with B.
- C. An exception is thrown.
- D. The variable varOutput ends with C.

Answer: B

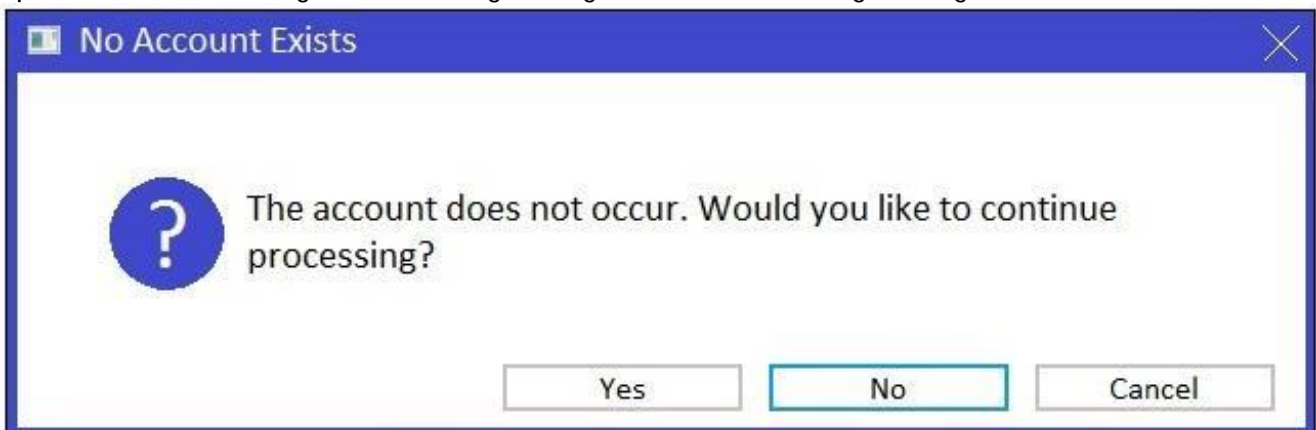
NO.2 You are assigned to develop a set of activities using a popular HR application. The application loads after you start interrogation from Pega Robot Studio, but you notice that you are unable to use the Robot Studio Interrogator to drag and drop over the desired controls.

Why are you unable to interrogate the desired application controls?

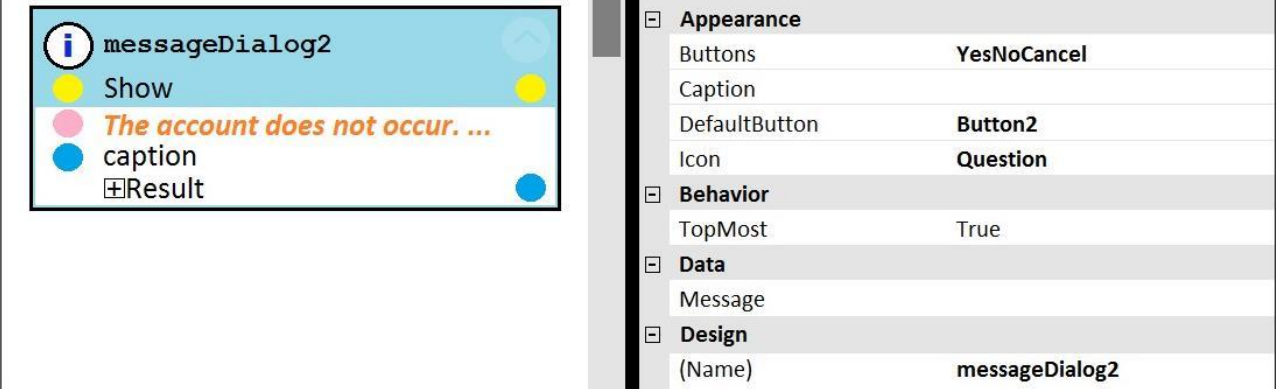
- A. The StartMethod on the adapter is set to StartAndWait, but the TargetPath property is undefined.
- B. The StartMethod on the adapter is set to Start, but the TargetPath property is undefined.
- C. The StartMethod on the adapter is set to MonitorAll, but the path property is undefined.
- D. The adapter's StartOnProject property is set to false.

Answer: D

NO.3 You add a MessageDialog component to an automation. Based on the following image, which option shows the configuration settings that generates the message dialog?

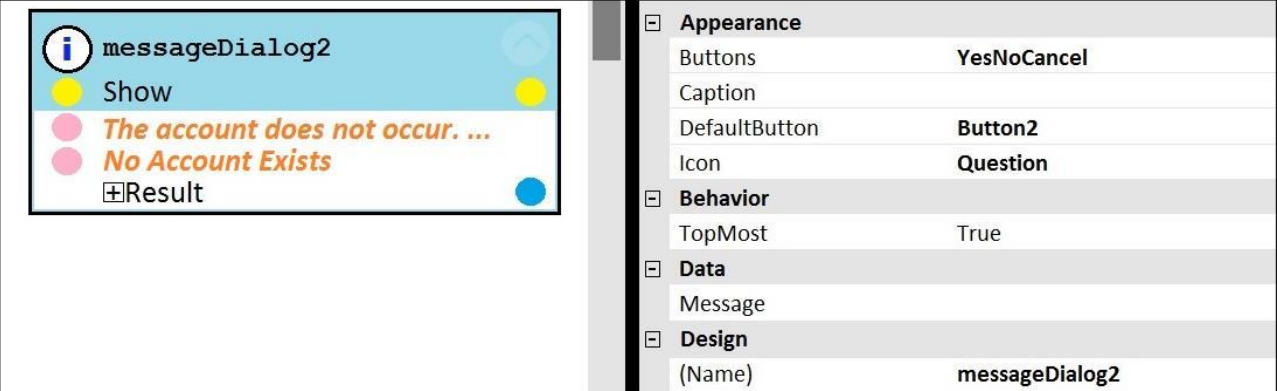


A



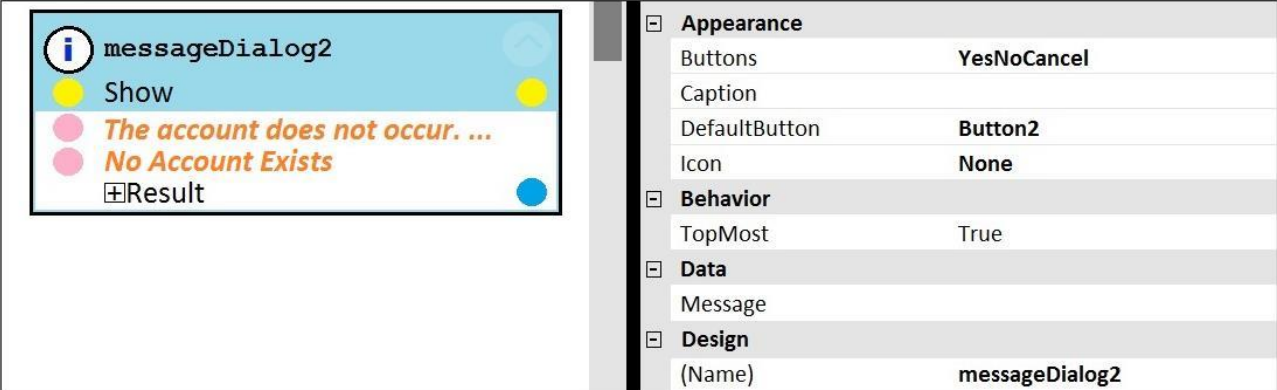
Appearance	
Buttons	YesNoCancel
Caption	
DefaultButton	Button2
Icon	Question
Behavior	
TopMost	True
Data	
Message	
Design	
(Name)	messageDialog2

B



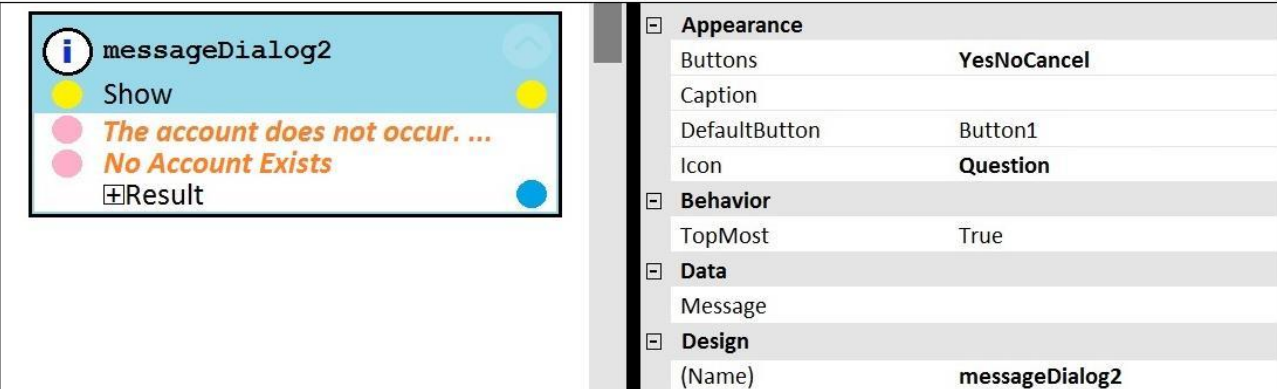
Appearance	
Buttons	YesNoCancel
Caption	
DefaultButton	Button2
Icon	Question
Behavior	
TopMost	True
Data	
Message	
Design	
(Name)	messageDialog2

C



Appearance	
Buttons	YesNoCancel
Caption	
DefaultButton	Button2
Icon	None
Behavior	
TopMost	True
Data	
Message	
Design	
(Name)	messageDialog2

D



Appearance	
Buttons	YesNoCancel
Caption	
DefaultButton	Button1
Icon	Question
Behavior	
TopMost	True
Data	
Message	
Design	
(Name)	messageDialog2

A. Exhibit D

B. Exhibit C

C. Exhibit B

D. Exhibit A

Answer: A

NO.4 An automation requires the web adapter to attach to a running instance of Internet Explorer. How do you achieve this requirement?

- A.** Configure the web adapter and set the StartMethod property to MonitorAll.
- B.** The web adapter cannot connect to a running instance.
- C.** Configure the web adapter and set the StartMehod property to Attach.
- D.** Configure the Universal Web adapter and set the StartMethod property to MonitorAll.

Answer: A

NO.5 A solution design document outlines several projects for the solution. You are assigned to the Loan Servicing project (LoanSvcPrj). The project uses the Interaction Framework function to communicate with the other projects.

Which three toolbox project items do you add to LoanSvcPrj? (Choose three.)

- A.** String Variable
- B.** Message Manifest
- C.** Interaction.xml
- D.** Interaction Manager
- E.** Activity

Answer: A,C,E

NO.6 Your Pega Robot Manager indicates that one of your robots has an unhealthy status and has failed several assignments.

What is the first step in troubleshooting an unhealthy robot?

- A.** Open the Developer Toolbar and use the Tracer to review a log of all the robot's actions.
- B.** Open the Developer Toolbar and use the Clipboard tool to review the data available in the pyWorkPage.
- C.** Confirm that the File Publisher Diagnostics settings are enabled and review a run-time log of all the robot's actions.
- D.** Modify the File Publisher Diagnostics settings to review a studio log of all the robot's actions.

Answer: D