

PDFBraindumps



Latest Pdf Braindumps	Top Certifications	Top Vendors		
<ul style="list-style-type: none">▶ LRP-614▶ BCABA▶ JN0-740▶ 250-405▶ DS-200▶ SDM_2002001040▶ ST0-250▶ H12-221▶ M2180-716	<ul style="list-style-type: none">▶ ISEB Certification▶ OCE▶ NVIDIA Certifications▶ Network+▶ IBM Certified Integrat▶ CCDH▶ IBM Certified Advanc▶ eserver Certified Spe▶ SAP-Certifications▶ Network Appliance N	<ul style="list-style-type: none">▶ HCNP▶ IFPUG Certifications▶ dotMobi Certification▶ SCMA▶ MCSD▶ NCLP▶ XMLMaster Certificat▶ CS5▶ CHA	<ul style="list-style-type: none">▶ ISEB▶ ASTQB▶ Aruba▶ Data Center Universit▶ HRCI▶ CIW▶ Patchlink▶ International Consorti▶ Acme-Packet	<ul style="list-style-type: none">▶ Fortinet▶ Ericsson▶ Liferay▶ Novell▶ Huawei▶ RSA▶ MYSQL▶ ISM▶ CheckPoint

<http://www.pdfbraindumps.com>

Latest pdf braindumps provider, high pass rate

Exam : **2V0-621D**

Title : VMware Certified Professional
6 - Data Center Virtualization
Delta Beta Exam

Vendor : VMware

Version : DEMO

NO.1 Which secondary Private VLAN (PVLAN) type can communicate and send packets to an Isolated PVLAN?

- A. Community
- B. Isolated
- C. Promiscuous
- D. Primary

Answer: C

Explanation:

A node attached to a port in a promiscuous secondary PVLAN may send and receive packets to any node in any others secondary VLAN associated to the same primary. Routers are typically attached to promiscuous ports.

Reference: <https://communities.vmware.com/thread/483486>

NO.2 Which two vCenter Server services are migrated automatically as part of an upgrade from a Distributed vCenter Server running 5.x? (Choose two.)

- A. vCenter Single Sign-on Service
- B. vSphere Web Client
- C. vSphere Inventory Service
- D. Storage Policy Based Management

Answer: B,C

Explanation:

vSphere web client and vSphere inventory services are migrated automatically during the Distributed vcenter server 5.x upgrade.

NO.3 When a Content Library is deleted, what happens to the files contained on the backing storage?

- A. The files will be unchanged.
- B. The files will be deleted.
- C. The files will remain and be marked as orphaned.
- D. The containing folder will be marked as orphaned.

Answer: B

Explanation:

When the content library is deleted, the files in backup storage will also be deleted.

NO.4 Which two statements regarding Distributed Resource Scheduler (DRS) affinity rules are true? (Choose two.)

- A. When two VM-VM affinity rules conflict, the older one takes precedence and the newer rule is disabled.
- B. Using Specify Failover Hosts admission control policy, VM-VM affinity rules are not supported.
- C. DRS gives higher precedence to preventing violations of anti-affinity rules than violations of affinity rules.
- D. It is not possible to create an affinity rule that conflicts with the other rules being used.

Answer: A,C

Explanation:

When you create a VM-Host affinity rule, its ability to function in relation to other rules is not checked. So, it is possible for you to create a rule that conflicts with the other rules you are using. When two VM-Host affinity rules conflict, the older one takes precedence and the newer rule is disabled. DRS only tries to satisfy enabled rules and disabled rules are ignored. DRS, vSphere HA, and vSphere DPM never take any action that results in the violation of required affinity rules (those where the virtual machine DRS group 'must run on' or 'must not run on' the host DRS group). Accordingly, you should exercise caution when using this type of rule because of its potential to adversely affect the functioning of the cluster. If improperly used, required VM-Host affinity rules can fragment the cluster and inhibit the proper functioning of DRS, vSphere HA, and vSphere DPM. Reference:

<https://pubs.vmware.com/vsphere55/index.jsp?topic=%2Fcom.vmware.vsphere.resmgmt.doc%2FGUID-793013E2-0976-43B79A00-340FA76859D0.html>

NO.5 Refer to the Exhibit.

Device Details	
Owner	NMP
Partition Details	
Partition Format	GPT
▶ Primary Partitions	1
▶ Logical Partitions	0
Multipathing Policies	
▶ Path Selection Policy	Fixed (VMware)
Storage Array Type Policy	VMW_SATP_EQL

An administrator wishes to provide Load Balanced I/O for the device shown in the Exhibit. To meet this requirement, which setting should be changed?

- A. Storage Array Type Policy = VMW_NMP_RR
- B. Path Selection Policy = Round Robin (VMware)
- C. Storage Array Type Policy = VMW_SATP_RR
- D. Path Selection Policy = MRU (VMware)

Answer: B

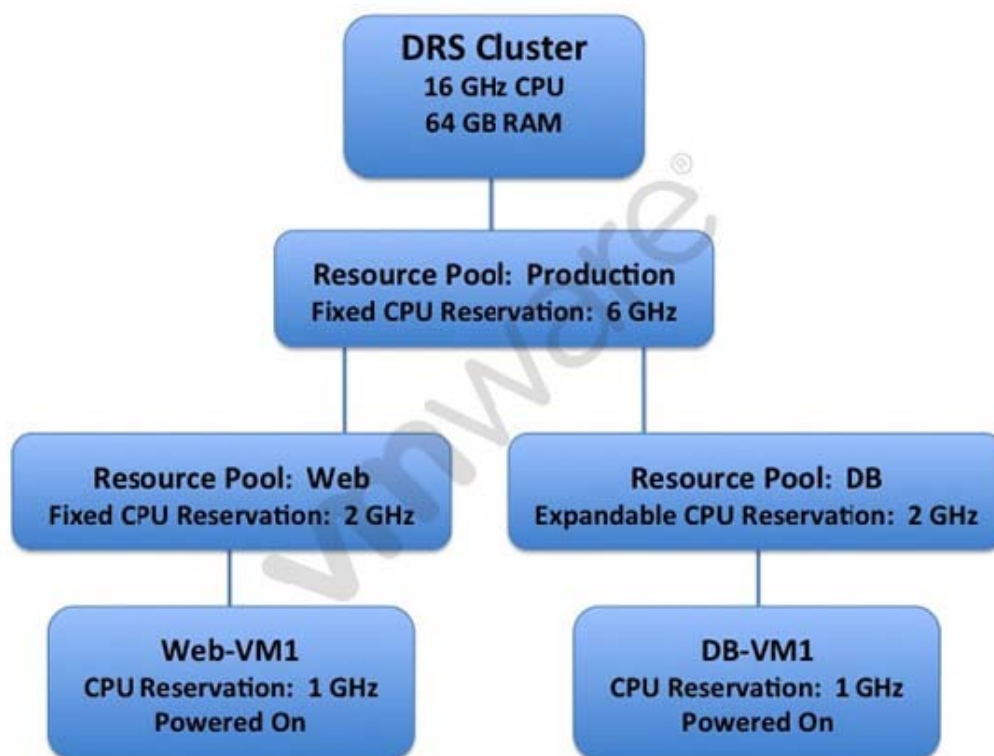
Explanation:

In round robin (VMware) the host uses an automatic path selection algorithm rotating through all available paths. This implements load balancing across all the available physical paths. Load balancing is the process of spreading server I/O requests across all available host paths.

The goal is to optimize performance in terms of throughput (I/O per second, megabytes per second, or response times).

Reference: https://pubs.vmware.com/vsphere-4-esxcenter/index.jsp?topic=/com.vmware.vsphere.config_fc.doc_40/esx_san_config/managing_san_systems/c_setting_a_path_selection_policy.html

NO.6 Refer to the Exhibit.



A vSphere 6.x DRS cluster is configured as shown in the Exhibit.

Based on the exhibit, which statement is true?

- A. A virtual machine can be powered on in the Web Resource Pool with a 3 GHz CPU Reservation.
- B. A virtual machine can be powered on in the Web Resource Pool with a 4 GHz CPU Reservation.
- C. A virtual machine can be powered on in the DB Resource Pool with a 3 GHz CPU Reservation.
- D. A virtual machine can be powered on in the DB Resource Pool with a 4 GHz CPU Reservation.

Answer: C

NO.7 Which two scenarios could cause Storage DRS to be disabled on a Virtual Disk (VMDK)? (Choose two.)

- A. The VMDK is an independent disk.
- B. The virtual machine has vSphere Fault Tolerance enabled.
- C. The VMDK is hosted on NFS storage.
- D. The virtual machine has a CD-ROM/ISO image connected.

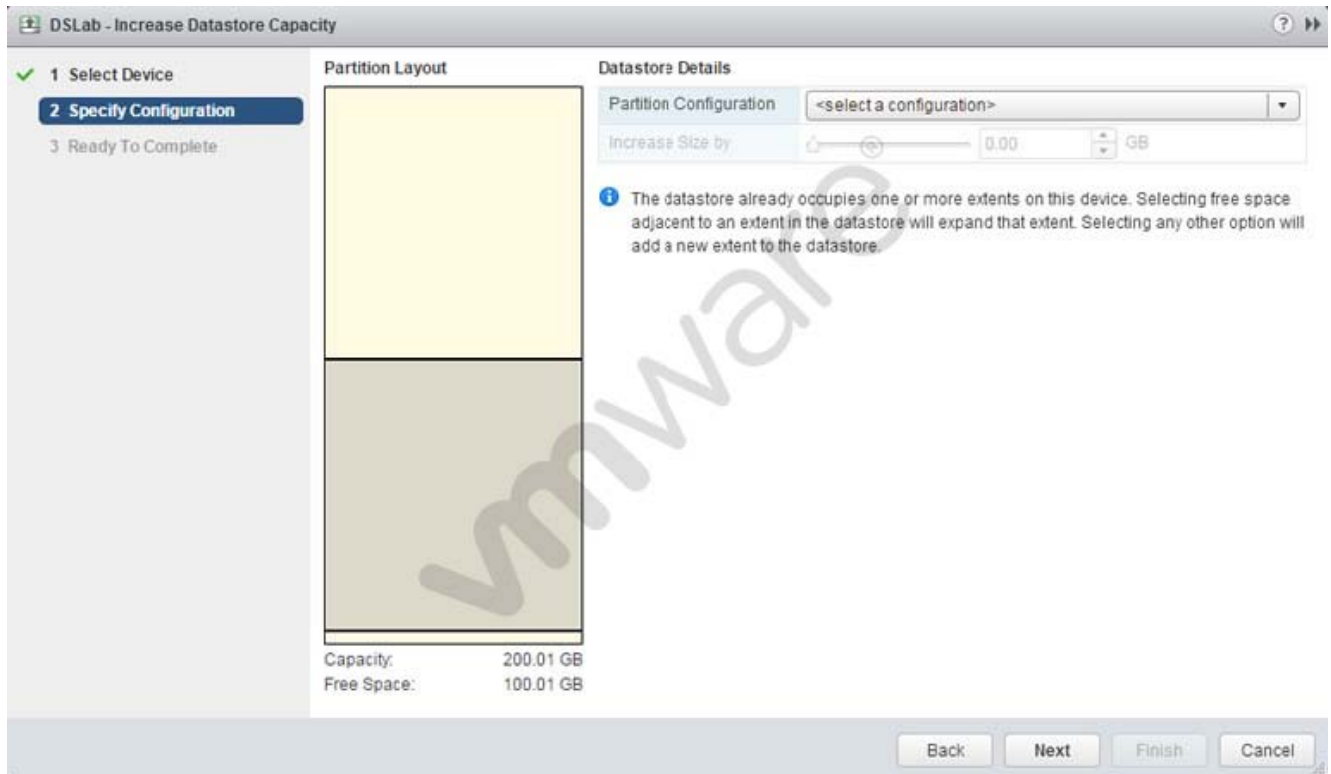
Answer: A,B

Explanation:

Reference:

<https://pubs.vmware.com/vsphere51/index.jsp?topic=%2Fcom.vmware.vsphere.troubleshooting.doc%2FGUID-B749AAA0-7B674A79-BEDC-395DFEC9FC60.html>

NO.8 Refer to the Exhibit.



An administrator wants to increase the capacity of a VMFS5 datastore; but the Increase Size by slider is not available, as shown in the Exhibit.

How should the administrator resolve this problem?

- A. Select a valid partition configuration from the drop-down menu.
- B. Use fdisk utility to manually resize the partition.
- C. Use the mouse to resize the partition indicated in the Partition Layout.
- D. Clicking Next will prompt for available usable space.

Answer: A

Explanation:

To increase the capacity of VMFS5 datastore, you can select the drop down menu on the right panel and select a partition configuration that can help increase the capacity.

NO.9 An administrator is configuring an identity source for Single Sign-On. The administrator will use the machine that Single Sign-On is running on, but does not want all users on the machine to be visible to SSO.

Which Identity Source meets this requirement?

- A. Active Directory (Integrated Windows Authentication)
- B. Active Directory as an LDAP Service
- C. OpenLDAP

D. LocalOS

Answer: A

NO.10 A vSphere Replication user needs to connect a source site to a target site.

What privilege is needed at both sites?

- A. VRM remote.Manage VRM
- B. VRM datastore mapper.Manage
- C. Host.vSphere Replication.Manage replication
- D. Virtual machine.vSphere Replication.Manage replication

Answer: A

Explanation:

When connecting sites, users at both sites must have VRM remote.Manage VRM privilege. When you connect sites that are part of the same SSO, you need to select the target site only without providing authentication details, as you are already logged in. After connecting the sites, you can monitor the connectivity state between them at Target Sites tab.

Reference: <https://pubs.vmware.com/vsphere-55/topic/com.vmware.ICbase/PDF/vspherereplication-55-admin.pdf>

NO.11 Refer to the Exhibit.



Review the Exhibit. An administrator has configured permissions for a group called VMGroup and a user named VMUser. A new Role has been created called PowerVM. The group and role have these characteristics:

-PowerVM role can power on VMs -VMGroup granted PowerVM role on VMFolder -VMUser is a member of VMGroup -VMUser granted No Access on VMFolder

Based on the exhibit, which statement best explains why VMUser is denied access to the VMFolder?

- A. The VMUser permission overrides the VMGroup permission.
- B. The No Access role overrides the PowerVM role.
- C. The VMGroup permission overrides the VMUser permission.
- D. The PowerVM role overrides the No Access role.

Answer: A

Explanation:

Reference: <https://communities.vmware.com/message/2329464>

NO.12 Which log file would you examine to identify an issue which occurred during the pre-upgrade phase of a vCenter Server upgrade process?

- A. vcdb_req.out
- B. vcdb_export.out
- C. vcdb_import.out
- D. vcdb_inplace.out

Answer: A

Explanation:

The vcdb_req.err file tracks any errors that were identified during the pre-upgrade phase.

Reference:

<http://pubs.vmware.com/vsphere60/index.jsp?topic=%2Fcom.vmware.vsphere.upgrade.doc%2FGUID-5EAC8B84-0A95-41ECAAF4-6CBBB3A5152A.html>

Topic 5, Administer and Manage vSphere Resources

NO.13 Which three ports are used by the vSphere Web Client when connecting directly to an ESXi 6.x host? (Choose three.)

- A. 443 TCP
- B. 902 TCP and UDP
- C. 903 TCP
- D. 5480 TCP
- E. 9443 TCP and UDP

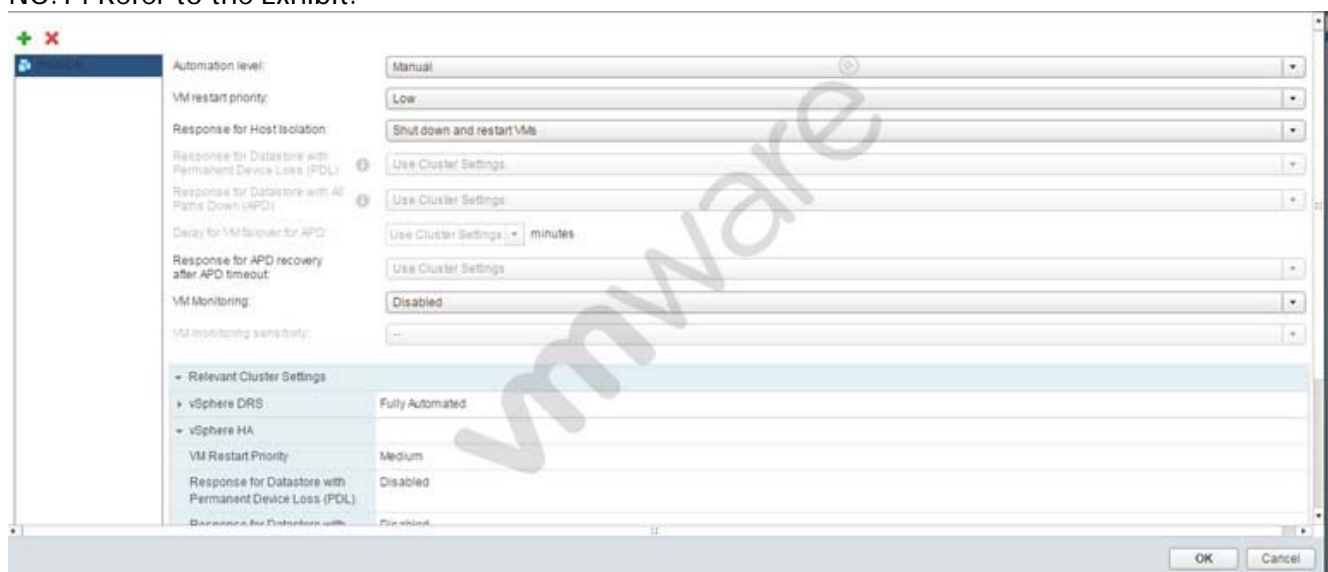
Answer: A,B,C

Explanation:

Reference:

http://kb.vmware.com/selfservice/microsites/search.do?language=en_US&cmd=displayKC&externalId=1021199

NO.14 Refer to the Exhibit.



The Prod-DB virtual machine has a VM Override as shown in the Exhibit.

What step, if taken, would require all virtual machines in the cluster to migrate automatically?

- A. Deselect the virtual machine from VM Overrides.
- B. Add all virtual machines to the VM Overrides.
- C. Change Response for Host Isolation to Use Cluster Settings.
- D. Change the Automation level to Use Cluster Settings.

Answer: D

Explanation:

After you create a DRS cluster, you can customize the automation level for individual virtual machines to override the cluster's default automation level.

For example, you can select Manual for specific virtual machines in a cluster with full automation, or Partially Automated for specific virtual machines in a manual cluster.

If a virtual machine is set to Disabled, vCenter Server does not migrate that virtual machine or provide migration recommendations for it. This is known as pinning the virtual machine to its registered host.

Reference:

<https://pubs.vmware.com/vsphere51/index.jsp?topic=%2Fcom.vmware.vsphere.resmgmt.doc%2FGUID-E83A6B62-37F8-46D08D0A-D6A9181979F2.html>

NO.15 An administrator needs to create an Integrated Windows Authentication (IWA) Identity Source on a newly deployed vCenter Server Appliance (VCSA).

Which two actions will accomplish this? (Choose two.)

- A. Use a Service Principal Name (SPN) to configure the Identity Source.
- B. Use a Domain administrator to configure the Identity Source.
- C. Join the VCSA to Active Directory and configure the Identity Source with a Machine Account.
- D. Create a computer account in Active Directory for the VCSA and configure the Identity Source.

Answer: A,C

Explanation:

Using a machine account when configuring an Active Directory identity source for vCenter Server requires that the Windows system be joined to the domain. If the system is not joined to the domain, SSO cannot leverage the machine account to create the identity source and perform its function as the secure token service user.

To resolve this issue in VCVA 5.5, use only the Use SPN option.

Reference:

http://kb.vmware.com/selfservice/microsites/search.do?language=en_US&cmd=displayKC&externalId=2058919

NO.16 An administrator is planning a vSphere infrastructure with the following specific networking requirements:

The ability to shape inbound (RX) traffic

Support for Private VLANs (PVLANS)

Support for LLDP (Link Layer Discovery Protocol)

What is the minimum vSphere Edition that will support these requirements?

- A. vSphere Essentials Plus

- B. vSphere Standard
- C. vSphere Enterprise
- D. vSphere Enterprise Plus

Answer: D

Explanation:

Reference:

http://kb.vmware.com/selfservice/microsites/search.do?language=en_US&cmd=displayKC&externalId=1010555

NO.17 A device's vStorage API for Array Integration (VAAI) support status command line output shows:

naa.500253825002a865 VAAI Plugin Name: ATS Status: unsupported Clone Status: unsupported Zero Status: supported Delete Status: unsupported

What is the corresponding VAAI support status in the vSphere Web Client?

- A. Unknown
- B. Supported
- C. Not supported
- D. Unsupported

Answer: A

Explanation:

The VAAI support status will be unknown.

Reference:

<https://pubs.vmware.com/vsphere55/index.jsp?topic=%2Fcom.vmware.vsphere.storage.doc%2FGUID-0520FD37-D7AD-4FBA9A2E-E5F8211FCBBB.html>

NO.18 Which two tasks does the Pluggable Storage Architecture (PSA) perform? (Choose two.)

- A. Handles I/O queueing to the logical devices.
- B. Handles physical path discovery, but is not involved in the removal.
- C. Handles physical path discovery and removal.
- D. Handles I/O queueing to FC storage HBAs.

Answer: A,C

Explanation:

When coordinating the VMware NMP and any installed third-party MPPs, the PSA performs the following tasks:

Reference:

<http://pubs.vmware.com/vsphere51/index.jsp?topic=%2Fcom.vmware.vsphere.storage.doc%2FGUID-C1C4A725-8BE4-4875919E-693812961366.html>